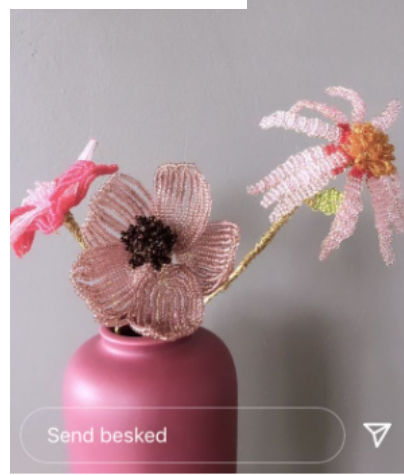
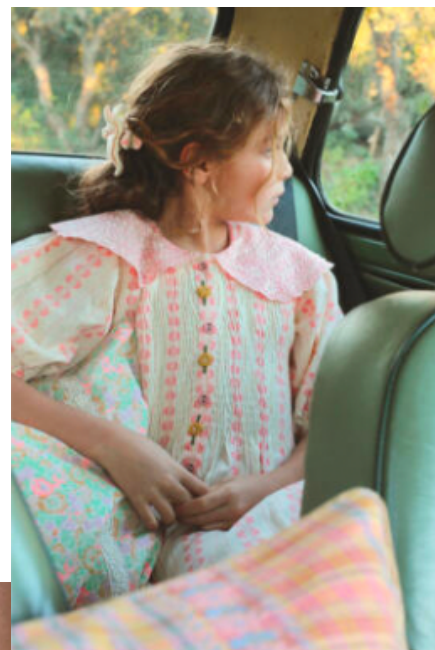
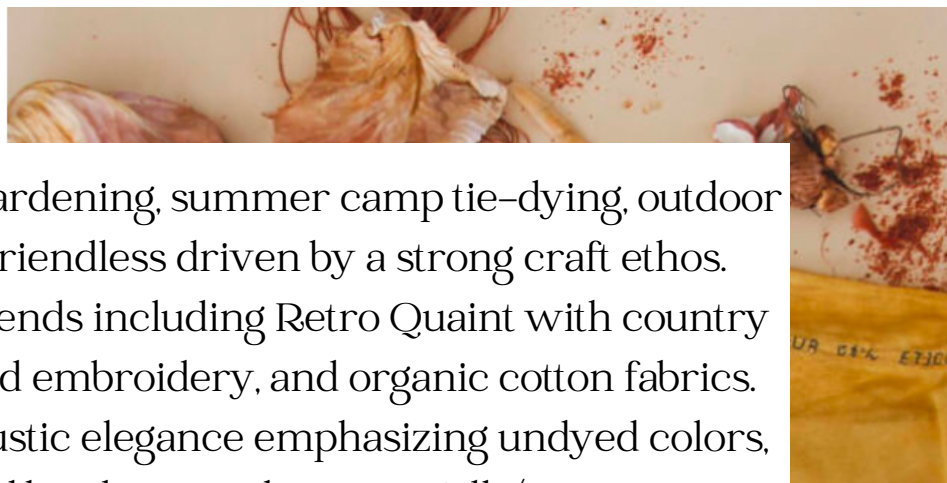




# SUMMERTIME THREADS

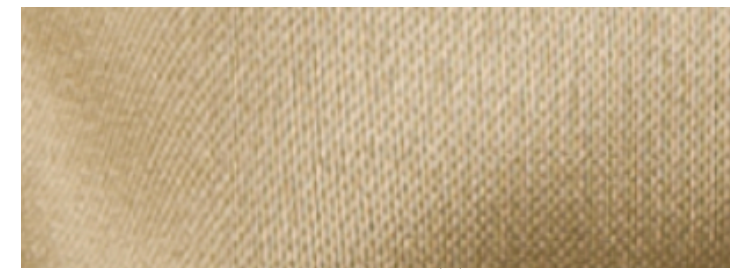
Embracing backyard gardening, summer camp tie-dyeing, outdoor exploring, and eco-friendly driven by a strong craft ethos. Showcasing WGSn trends including Retro Quaint with country cabin checks, scattered embroidery, and organic cotton fabrics. Plants pigments and rustic elegance emphasizing undyed colors, natural yarns, elevated by sheen and texture. Silk/satin micro-pleats inspired by mushroom gills. Barn quilt based embroidery and patchwork and so much more.



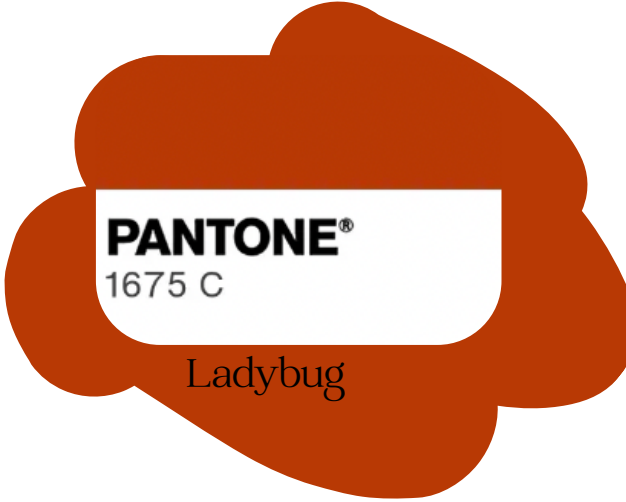
Targeted towards girls ages 7 to 12 with a love for craft and the outdoors.

WGSN Trends for Spring / Summer 2025

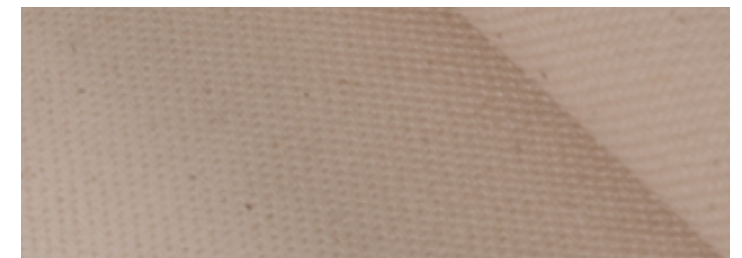
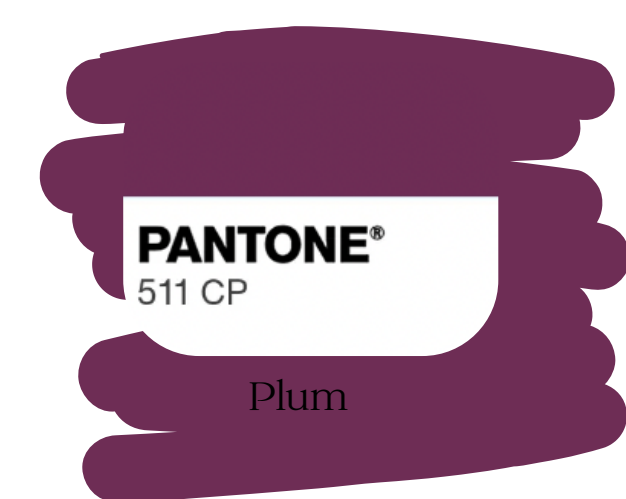




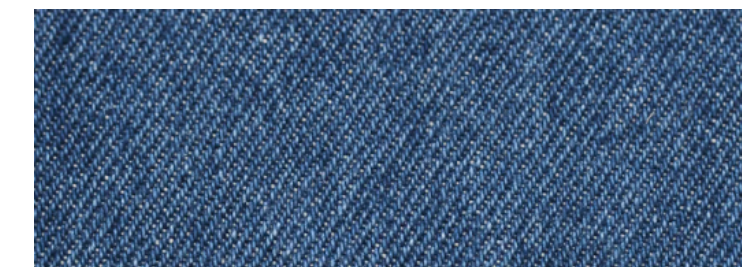
Polyester Fiber Content // 100% Polyester



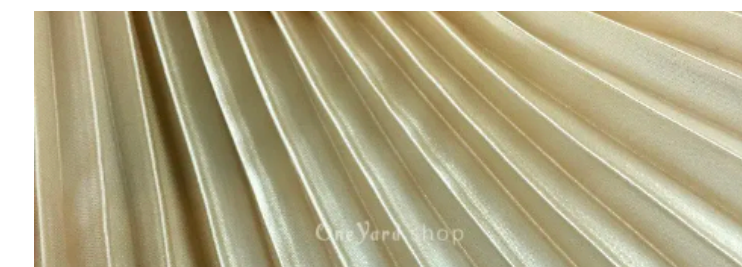
Heathered Faded Denim Lightweight Linen Chambray  
Fiber Content // 100% Linen



Cotton Fiber Content // 100% Cotton



Denim Fiber Content // 60% Cotton 40% Polyester



Pleated Stretch Satin Fiber Content // 95% Polyester 5% Spandex  
French Double Faced Satin Ribbon Fiber Content // 100% Polyester

**PANTONE®**  
PMS 645 C  
#7DA1C4

**PANTONE®**  
544 C

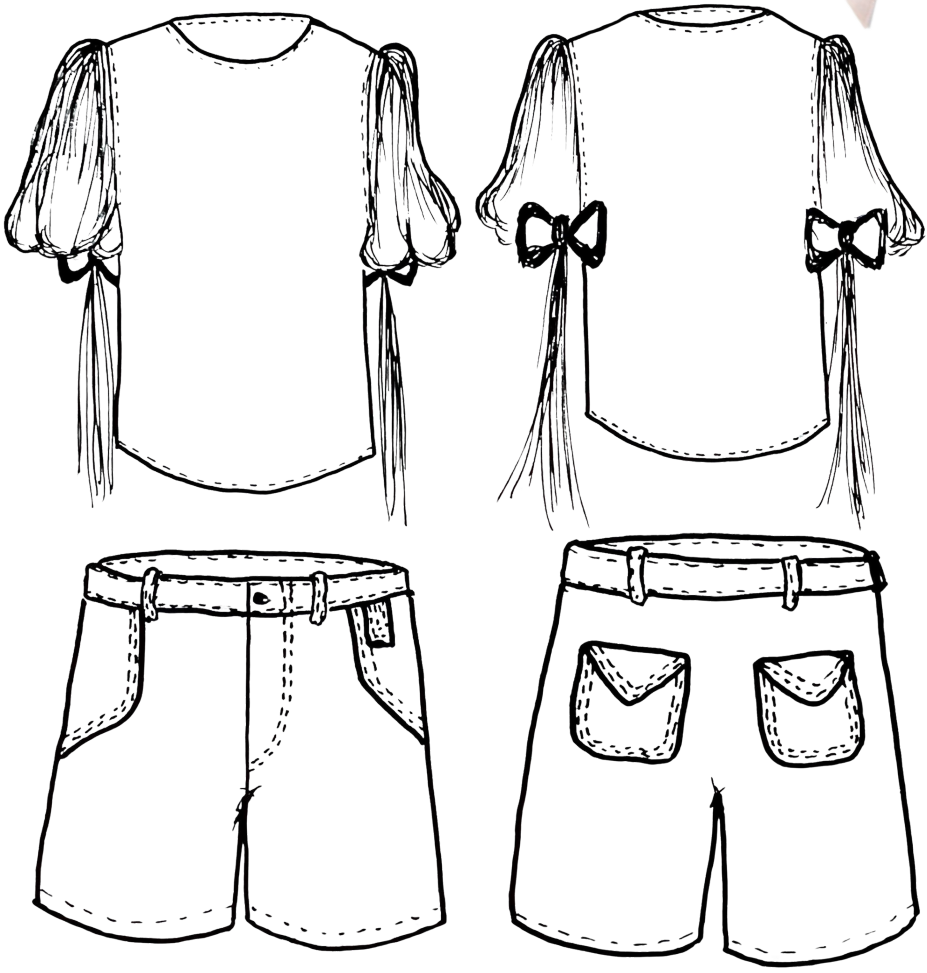
**PANTONE®**  
726 C

**PANTONE®**  
PMS 154 C  
#9B5A1A



Rustic Elegance

Fabric Content // 100% Polyester  
Sleeves// Organza Finish  
Denim// 60% Cotton 40% Polyester



Look No.1

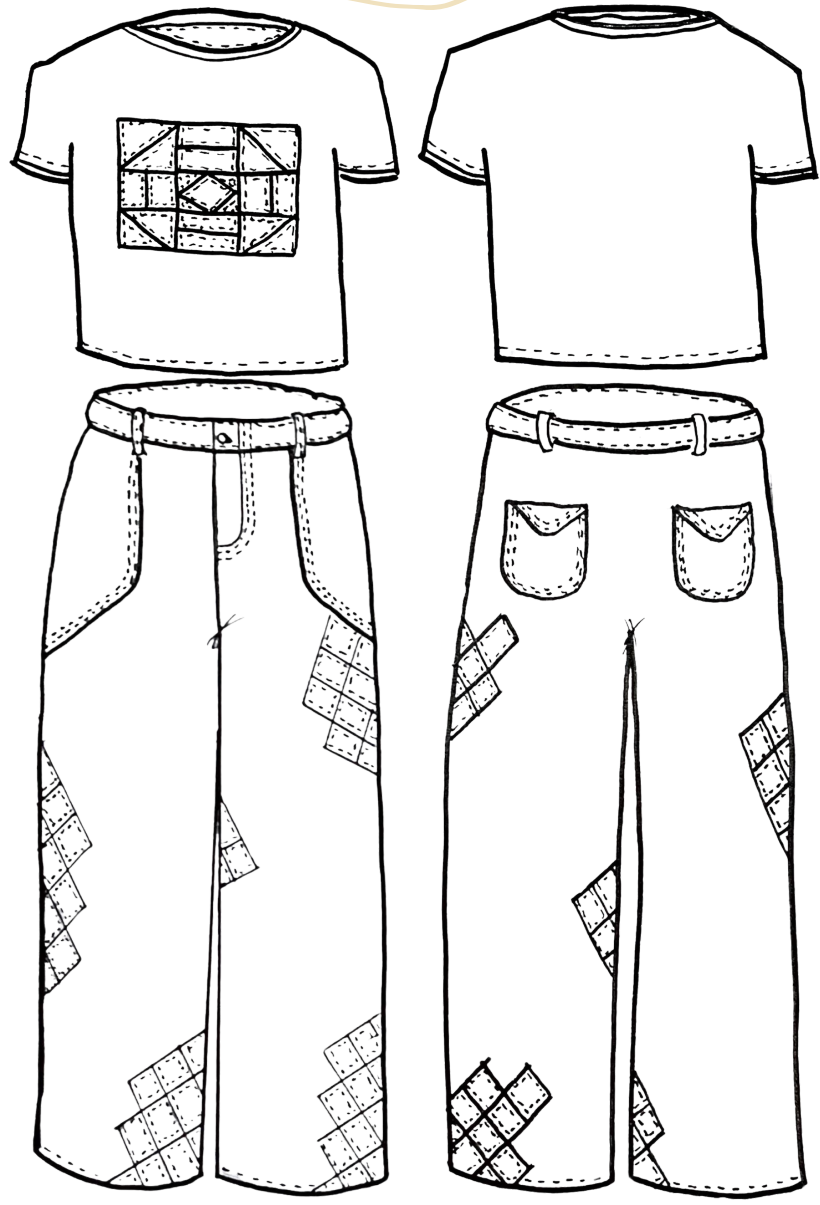
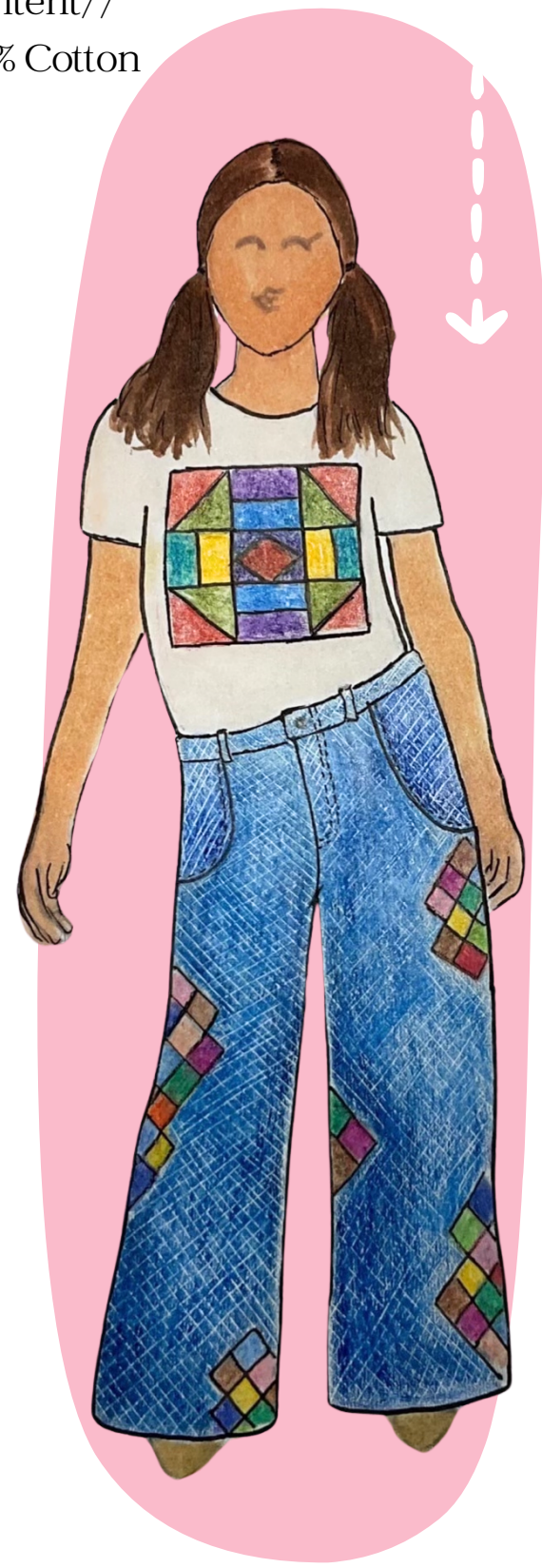




Denim Fiber  
Content//  
60% Cotton  
40% Polyester

Cotton Fiber  
Content//  
100% Cotton

Barn Quilt inspired patchwork



**PANTONE®**  
810 C  
FFD635



**PANTONE®**  
511 CP



**PANTONE®**  
1675 C



**PANTONE®**  
5575 C



**PANTONE®**  
726 C

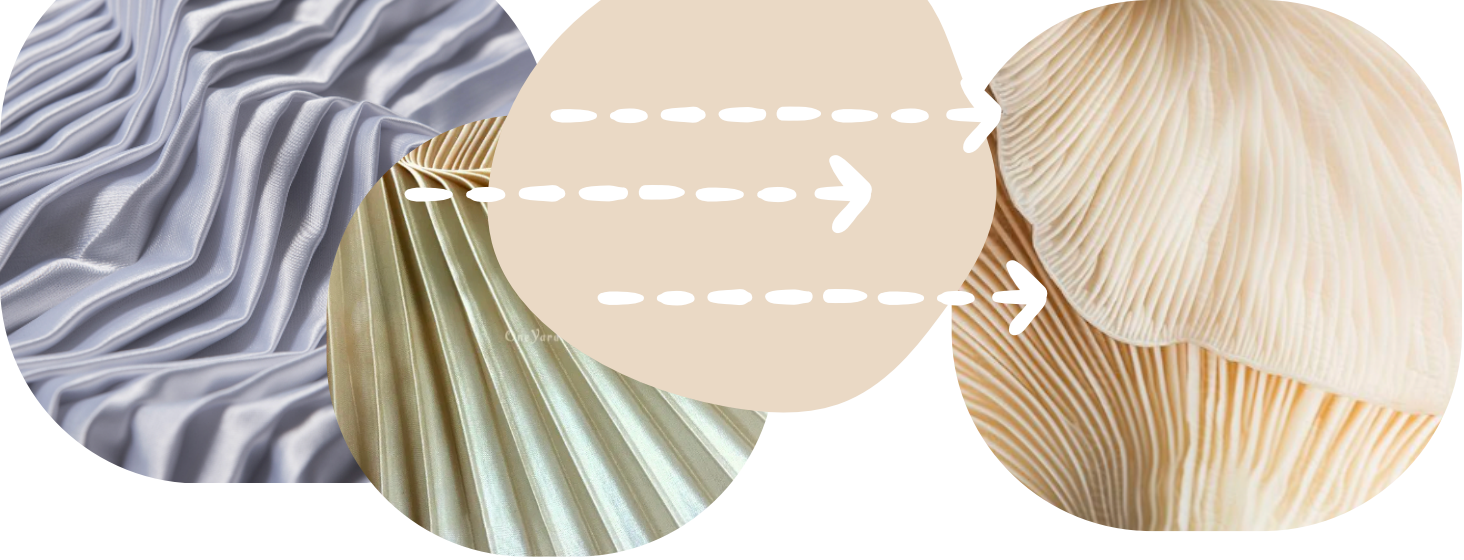


**PANTONE®**  
PMS 645 C  
7DA1C4



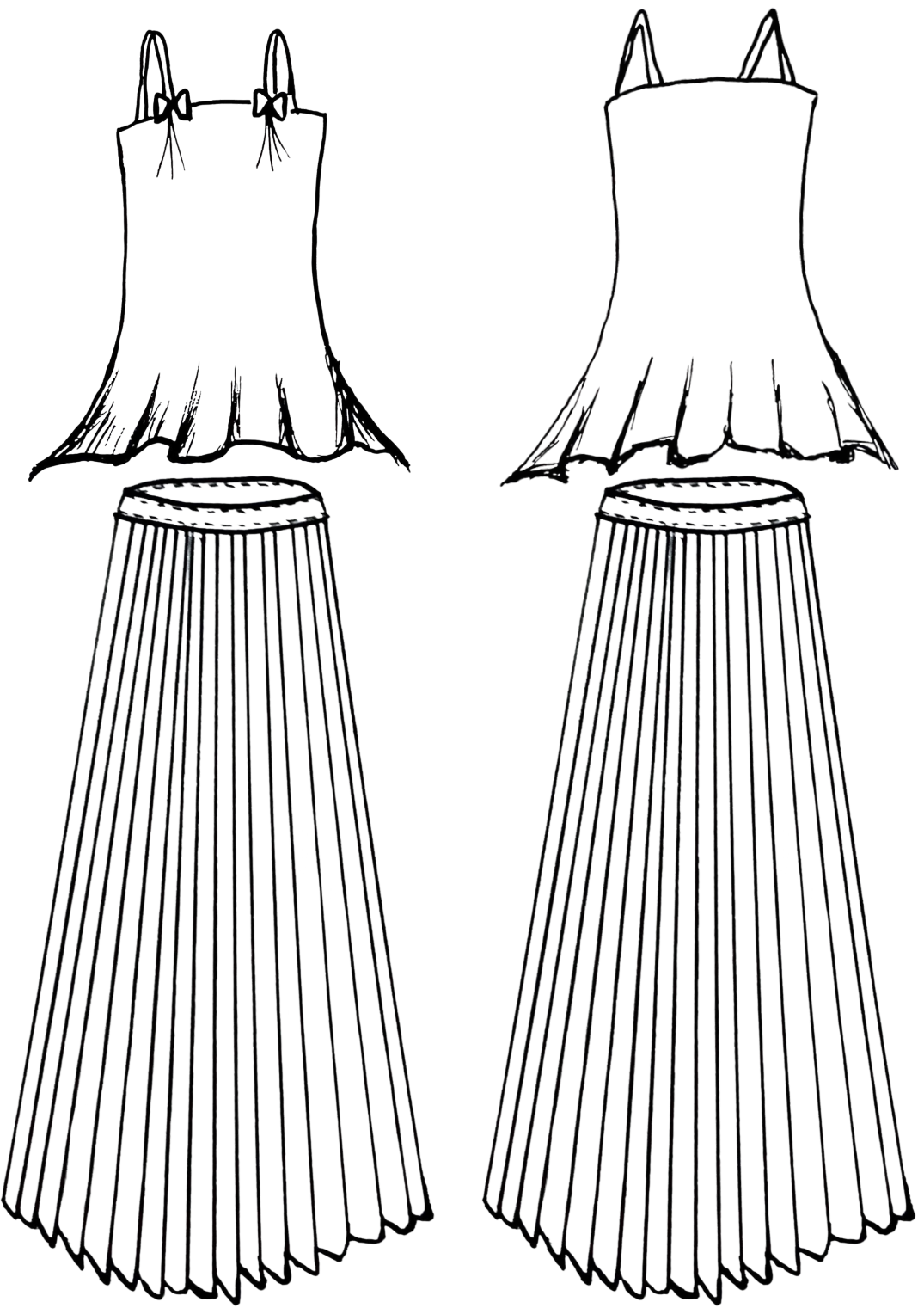
**PANTONE®**  
PMS 154 C  
9B5A1A

Look No.2



Silk micro pleated skirt inspired by mushroom gills

Fabric Content//  
Stretch Satin  
95% Polyester  
5% Spandex



Look No.3

# SUMMERTIME THREADS

