



**CADS 5770 SUSTAINABLE DESIGN PROJECT**

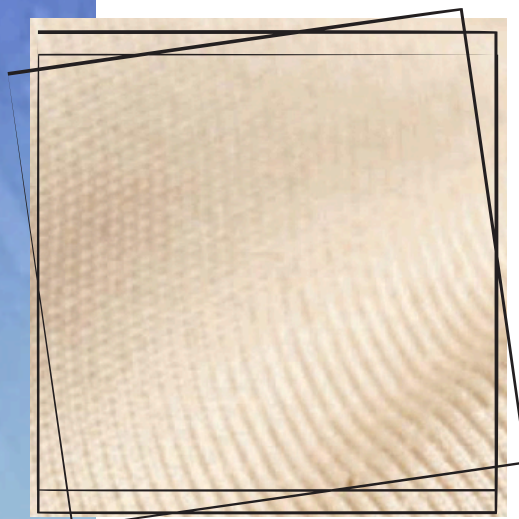
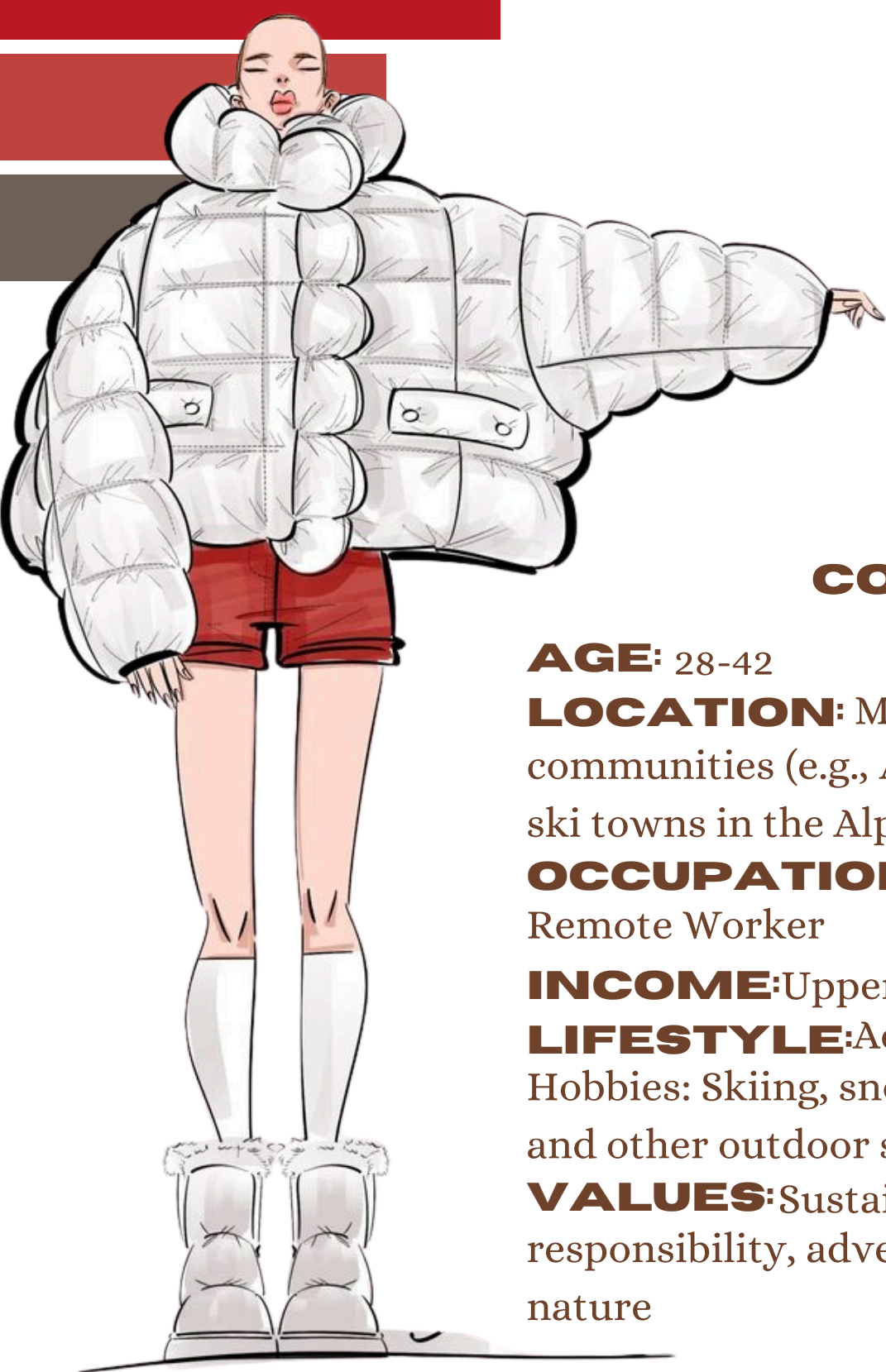
# APRÈS SKI



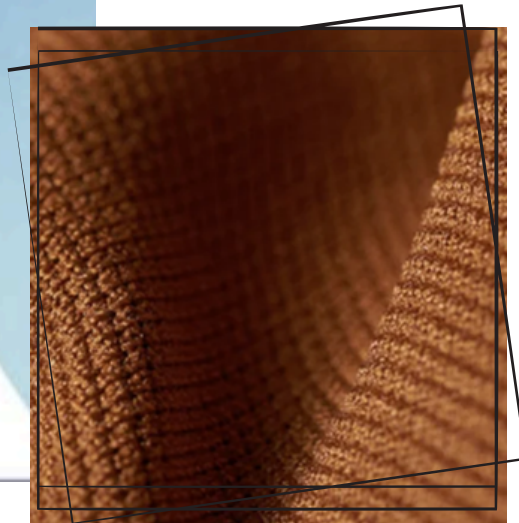
Jersey

# POWDER

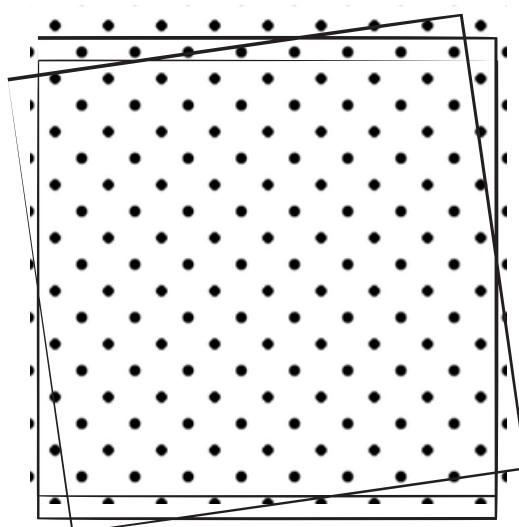
# TO THE PEOPLE



S.Cafe Fabric  
High Gauge,  
Jersey



75/72 SD+ 40D OP  
S.Café®  
Recycled  
Polyester  
Filament



S.Cafe  
eco<sup>2</sup>sy®  
multi-layer  
insulation

## CONSUMER PROFILE

**AGE:** 28-42

**LOCATION:** Mountain towns, ski resorts, or active outdoor communities (e.g., Aspen, Vail, Jackson Hole, Park City, or small ski towns in the Alps)

**OCCUPATION:** Professional, Entrepreneur, Creative, or Remote Worker

**INCOME:** Upper-middle to high-income bracket

**LIFESTYLE:** Active, outdoors-oriented, eco-conscious  
Hobbies: Skiing, snowboarding, hiking, mountain biking, yoga, and other outdoor sports

**VALUES:** Sustainability, health, wellness, environmental responsibility, adventure, and a deep connection with nature

# WHY COFFEE GROUNDS?

Coffee grounds are an abundant and underutilized waste resource that can be transformed into functional textile fibers, offering a renewable alternative to traditional petroleum-based materials. The process of using recycled coffee grounds in fabric production not only diverts waste from landfills, but also contributes to a smaller carbon footprint in the apparel industry.



**SMALLER CARBON  
FOOTPRINT**

**ODOR CONTROL**

**UV PROTECTION**

**QUICK DRYING**

**HEAT RETENTION**

**WIND RESISTANT**

**LIGHTWEIGHT**

**COMPRESSIBLE**

## **S. CAFE IS ONE OF THE LEADING COMPANIES CREATING COFFEE-INFUSED FABRICS TODAY**

When coffee is brewed, roughly 0.2 percent of the bean, by weight, is used. S.Café takes the other 99.8 percent of the grounds and, using a low-temperature, high-pressure process, combines the grounds into the yarn surface of a polyester filament. This turns the yarn that had previously been 100 percent synthetic into a blended fiber, thereby reducing overall polyester in the production chain. In addition to odor absorption, S.Café's coffee-infused apparel has other performance benefits, including the ability to dry out almost twice as fast as cotton, while offering natural UV protection.

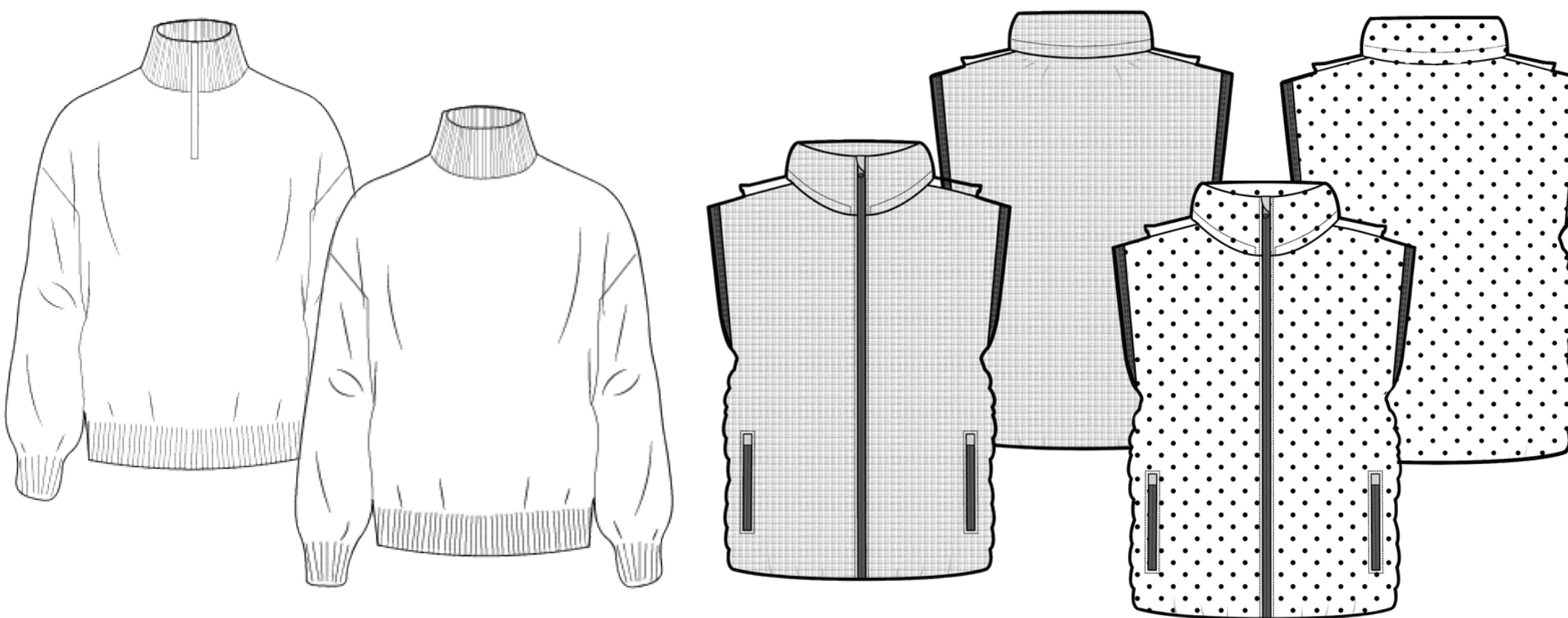
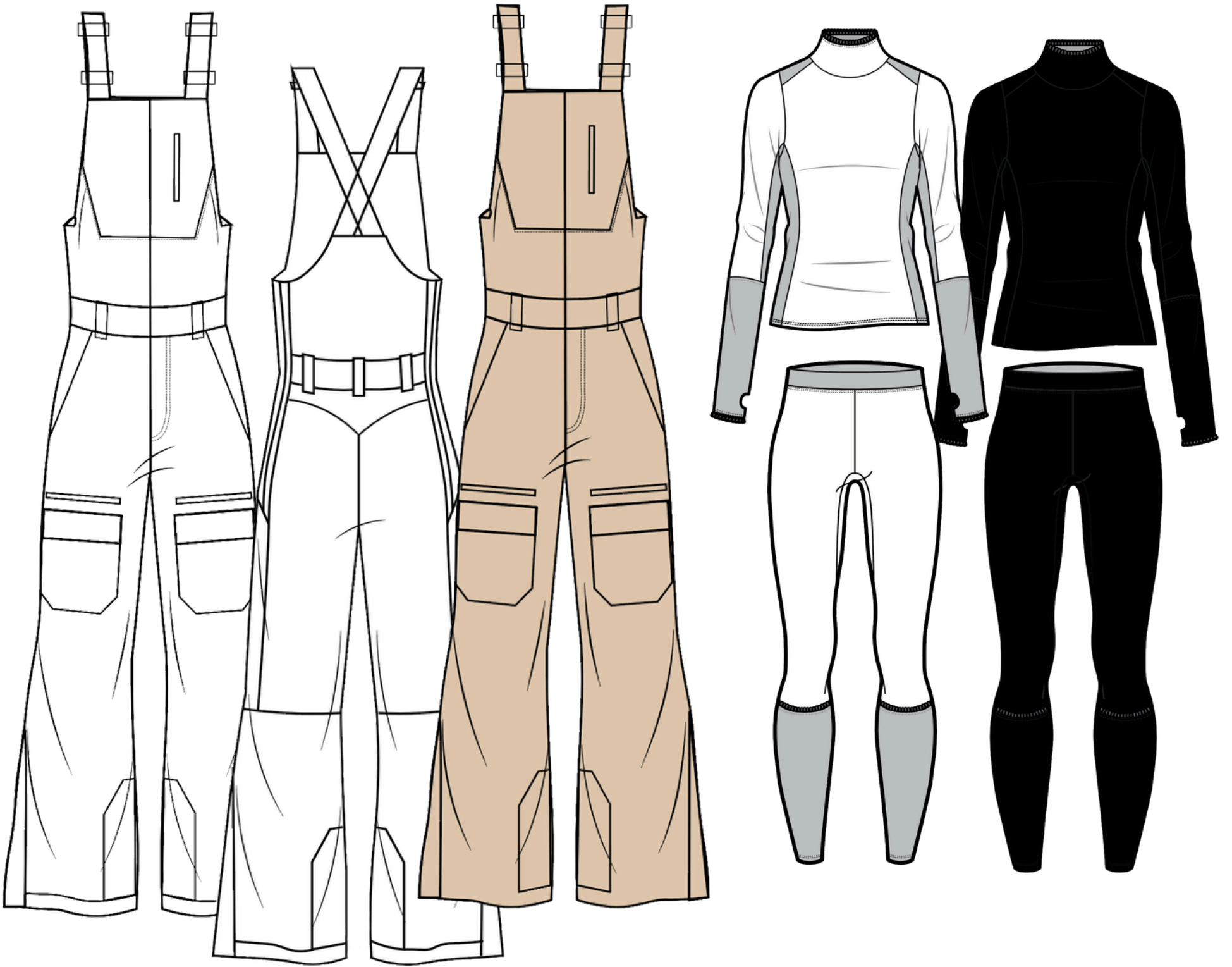


### **FABRIC MAKEUP:**

made entirely from recycled plastic water bottles and discarded coffee yarns. This fabric is a perfect performance alternative to petroleum based products. Specially made for jackets due to high insulation properties.



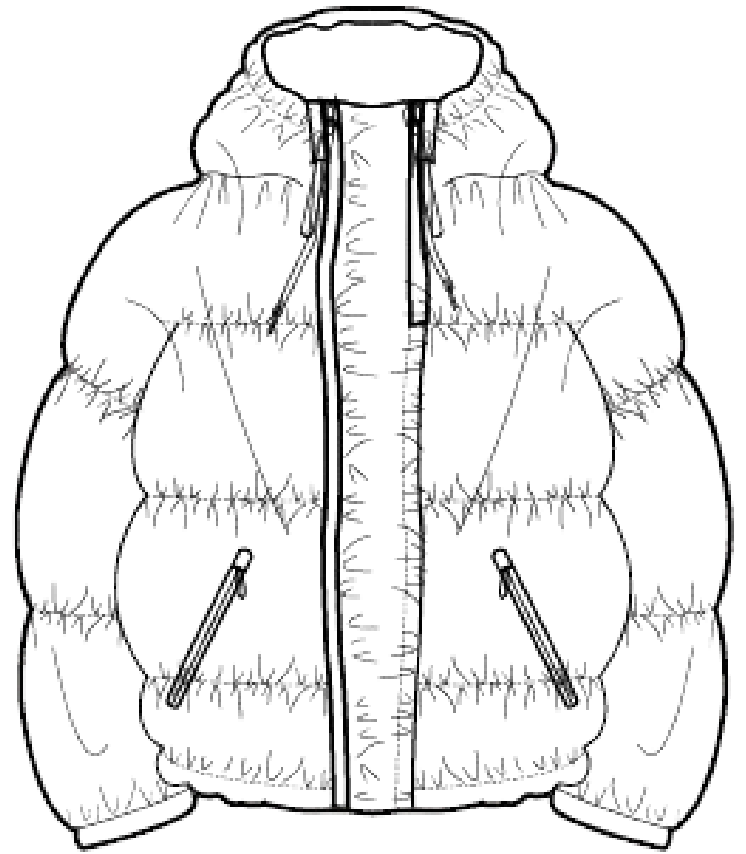
# TECHNICAL FLATS: COLLECTION LINE UP



# SUSTAINABLE SKIWEAR FRONT VIEW

**PROTO# 1**  
**STYLE# 1**  
**SEASON: AUTUMN/WINTER**  
**25/26**  
**STYLE NAME: PUFFER**  
**FIT TYPE: NATURAL**  
**BRAND: SUSTAINABLE**  
**SKIWEAR**  
**STATUS: PROTOTYPE-1**

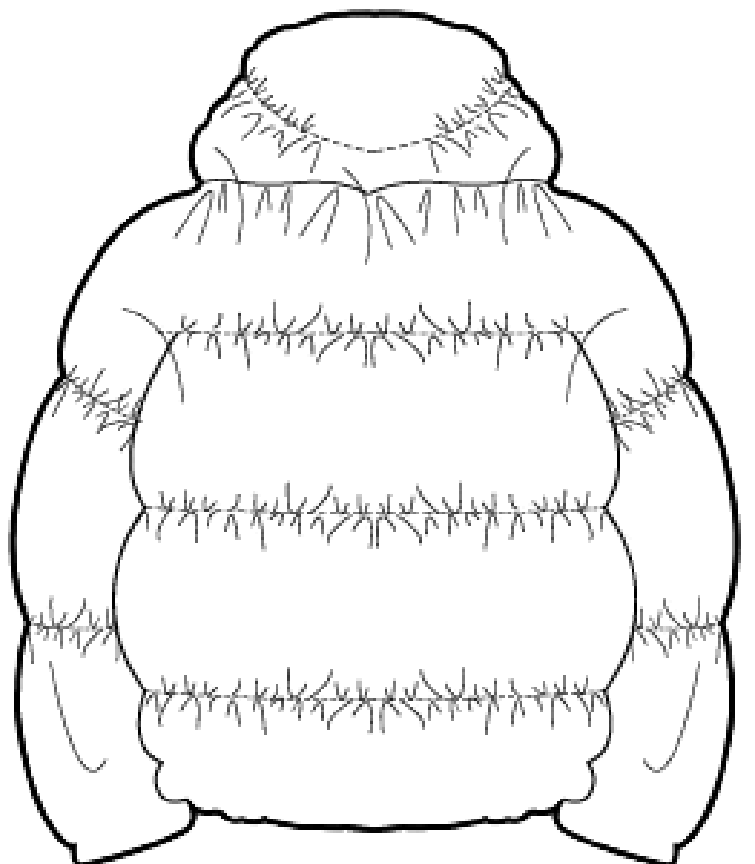
**SIZE RANGE: WOMENS XS-XL**  
**SAMPLE SIZE: SMALL**  
**DESIGNER: SARAH VALENTINE**  
**DATE FIRST SENT: 11.10.2024**  
**DATE REVISED: --**  
**FABRICATION: 75/72 SD+ 40D**  
**OP S.CAFÉ® RECYCLED**  
**POLYESTER FILAMENT**



## BACK VIEW

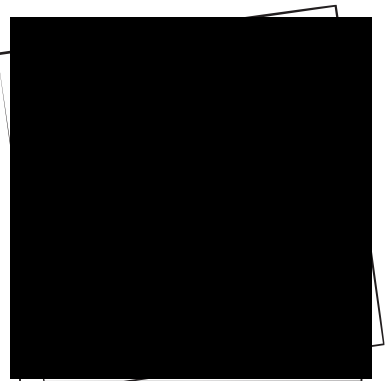
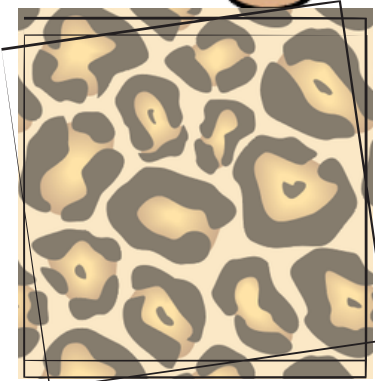
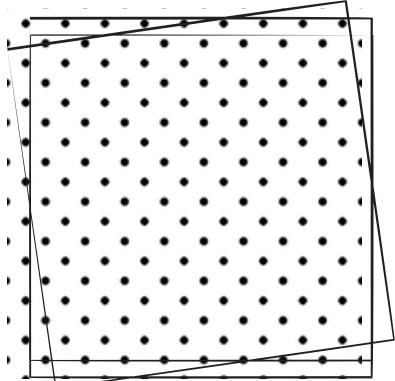
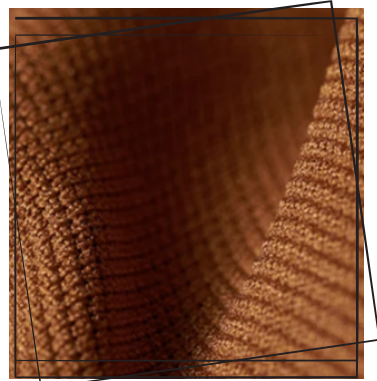
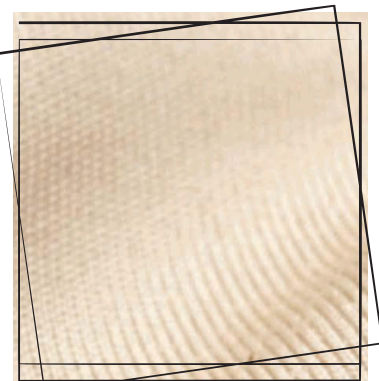
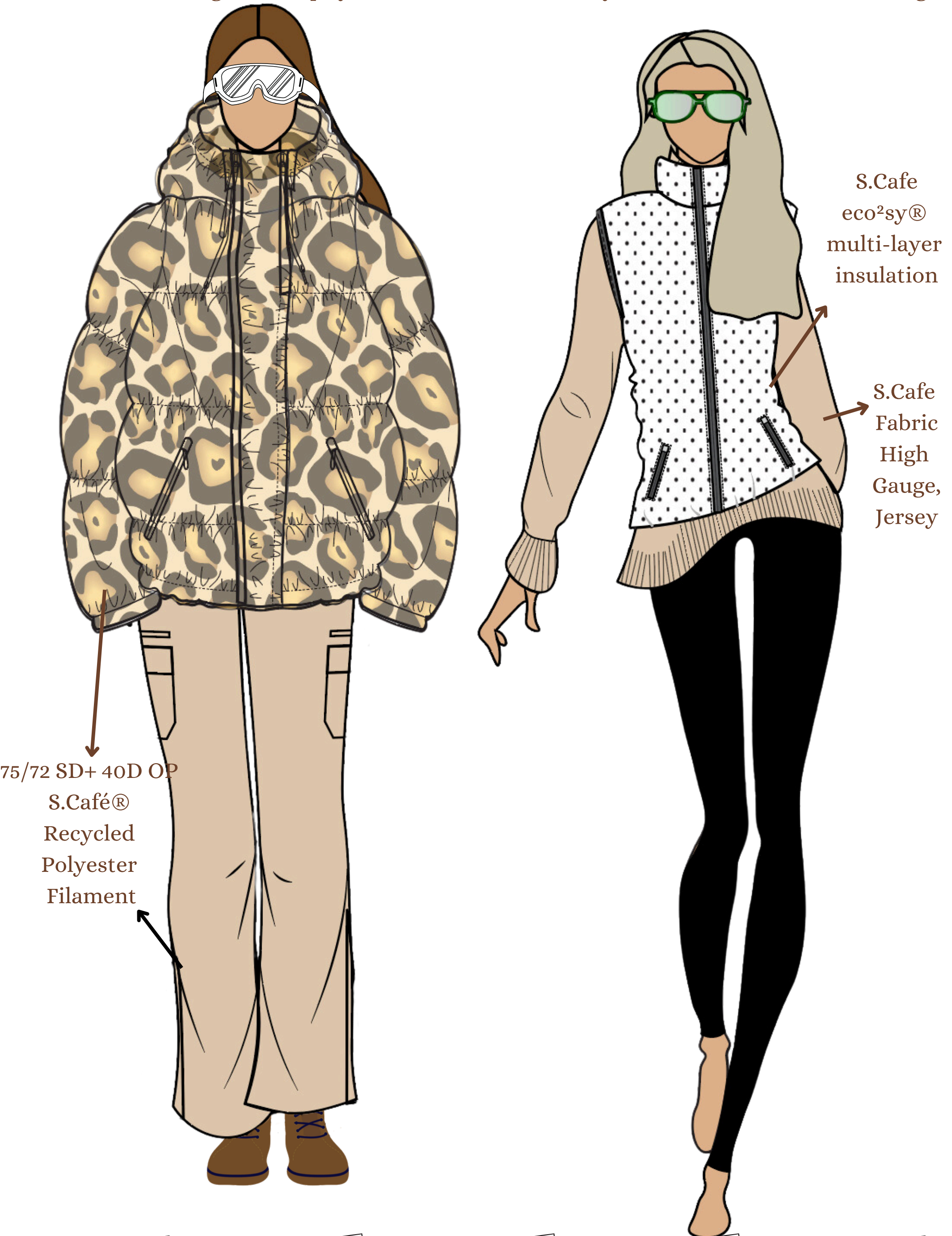
**PROTO# 1**  
**STYLE# 1**  
**SEASON: AUTUMN/WINTER**  
**25/26**  
**STYLE NAME: PUFFER**  
**FIT TYPE: NATURAL**  
**BRAND: SUSTAINABLE**  
**SKIWEAR**  
**STATUS: PROTOTYPE-1**

**SIZE RANGE: WOMENS XS-XL**  
**SAMPLE SIZE: SMALL**  
**DESIGNER: SARAH VALENTINE**  
**DATE FIRST SENT: 11.10.2024**  
**DATE REVISED: --**  
**FABRICATION: 75/72 SD+ 40D**  
**OP S.CAFÉ® RECYCLED**  
**POLYESTER FILAMENT**



## COLLECTION LINE UP

Introducing S.Cafe® Skiwear Collection, the perfect fusion of sustainability and performance. Crafted using innovative fabric technology, S.Cafe® fabric is made from recycled coffee grounds and plastics, offering natural odor control, superior heat retention, and fast-drying properties. Whether you're carving through fresh powder or après-skiing in style, our gear keeps you comfortable, dry, and odor-free while reducing your environmental impact. Gear up for the slopes with performance-driven, eco-conscious clothing that keeps you warm, fresh, and ready for adventure—all season long.



Ideal season: Autumn/Winter

Swedish brand Peak Performance released sustainable sportswear/ski wear fresh additions to its sustainability-driven FLO or Fabric Leftovers programme, which turns surplus fabrics into new technical products. The limited-edition capsule of jackets and bags uses leftover PFC-free DWR materials, giving new life to would-be industrial waste.

### Coffee Ground Fiber

Coffee ground fibers are a type of fiber that is created by recycling coffee grounds. The products produced with these fibers hold the benefits including odor control, sweat wicking, plus it dries 200 times faster than cotton.

# POWDER



# TO THE PEOPLE



WGSN Article: Sustainability and Innovation: Long-term Design

- EU legislation on product longevity plus growing participation in resale and rental means designing for durability will move up brands' priority lists



Name ideas:

- FROSTFÊTE
- ↳ combining the fun of the slopes with an eco-conscious twist

### Why Coffee Ground Fibers?

Coffee grounds are an abundant and underutilized waste resource that can be transformed into functional textile fibers, offering a renewable alternative to traditional petroleum-based materials. The process of using recycled coffee grounds in fabric production not only diverts waste from landfills but also contributes to a smaller carbon footprint in the apparel industry.

# THE FUTURE OF FASHION IS SUSTAINABLE

